

RCCD

RIVERSIDE COMMUNITY
COLLEGE DISTRICT

MORENO VALLEY COLLEGE | NORCO COLLEGE | RIVERSIDE CITY COLLEGE

Building an Innovative & Inclusive Workforce for the region


Presented by
Chancellor Wolde-Ab Isaac, Ph.D.

January 2023



Credit for Prior Learning through MAP

Creating a community of colleges and universities that increasingly understand the benefits and opportunities of CPL, are skilled at evaluating and awarding CPL to students, and freely share their articulations with other higher education institutions.

- A home-grown product of RCCD
 - Started at  NORCO COLLEGE
- In 2022 expanded to a network of 55 CA Community Colleges
- In 2023 expanding to all 116 Colleges CA Community Colleges
 - Thanks to \$3M in new federal funding to support scaling statewide
 - Total funding to date supporting CA MAP Initiative = \$7.4 million state and federal
- If 1 million CA adults enrolled based on an offer of 10-15 units of CPL, the savings in G.I. Bill \$\$ would exceed \$10 billion — just in CA



Goals

- Mobilize Community Colleges to align with CSUs, UCs, and Workforce Partners, to maximize Credit for Prior Learning (CPL) so:
 - Veterans can complete (with no debt) a BS or MS with existing 3-year benefits
 - Adult Re-Entry learners can complete (with no debt) higher education and skill attainment with existing financial aid

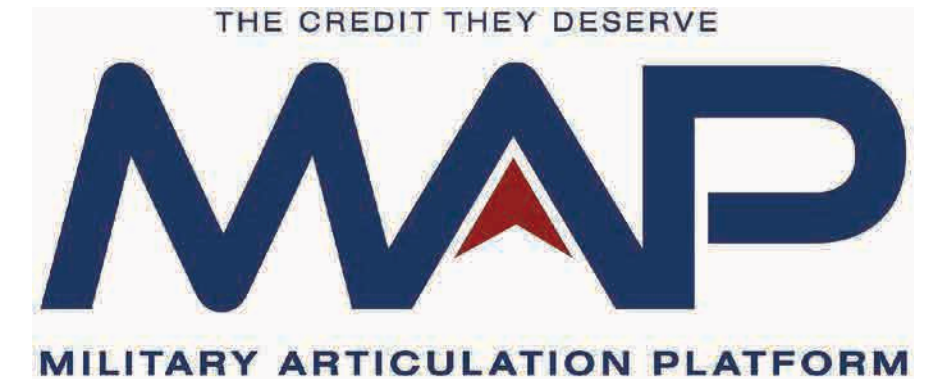
Progress

- CSUs now accept all CPL transcribed by participating Community Colleges
- Community Colleges are partnering with CSUs to develop AS to BS Pathways with specific CPL identified



Outcomes

- In the first implementation year, Norco College (the pilot college) awarded 1170 units, saving \$2.8 million
 - 44 students completed degree or certificate as a result of CPL
 - 24 Electricians certified as a result of CPL
 - \$846 thousand increase in wages (based on [salary surfer](#) data)
- For students participating in MAP completion rate nearly doubles: 49% vs. 27%
- Time to degree is reduced 9-14 months
- Avg. Savings = \$69,600 per veteran and \$10,200 per adult re-entry learner
- In 2023, MAP colleges on track to award 20,000+ CPL units
 - to 1000+ students
 - saving \$46.4+ million
- In 2024, MAP colleges estimated to award 100,000+ CPL units
 - to 5000+ students
 - saving \$232+ million



Earning-While-Learning With Apprenticeships

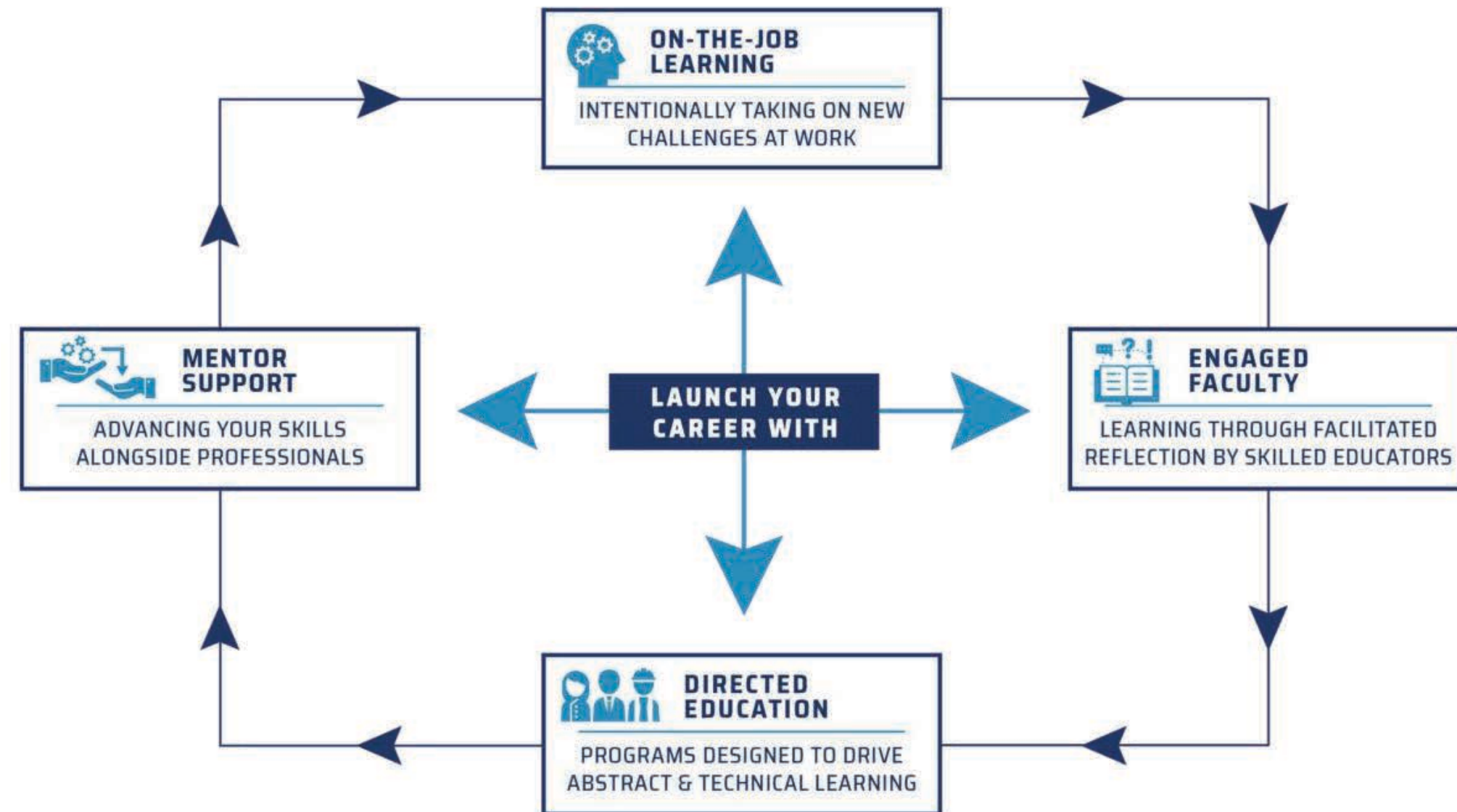
- Regional cooperation between K-12, RCCD, UC & CSUs, Labor and local business partners



- Earning-While-Learning in high-demand, high-paying industries is a key strategy of the IETTC



Local Apprenticeships Uniting a Network of Colleges & High Schools



COLLEGE WITHOUT DEBT

The LAUNCH program blends classroom education with real-world experience, helping individuals gain both the knowledge and the experience needed to succeed.

Accomplishments



- When LAUNCH was formed in 2018, only 2 Inland Empire community colleges offered apprenticeship programs.
- Today, 9 of the region's 12 community colleges offer apprenticeship pathways.
- Prior to LAUNCH, apprenticeship pathways in the Inland Empire were in the building and construction trades. LAUNCH now sponsors 17 new apprenticeship programs in:
Manufacturing, Engineering, Information Technology, Cybersecurity, Automotive, Supply Chain, Logistics, Healthcare, and Early Childhood Education.
 - LAUNCH has served over 600 registered apprentices in non-traditional sectors, and over 700 individuals through pre-apprenticeship training programs that led to apprenticeships.
 - This translates into over \$56 million in earned salaries for Inland Empire apprentices

Fostering Innovation and Grow in Government Contracting and Procurement

- Helps businesses identify, compete for and win government contracts for the Inland Empire
- Provided 26 webinars, presentations, and training events to the region's entrepreneurs



2021 Results for Local Businesses ...

Assisted 255 clients in generating about \$25 million dollars in locally awarded government contracts



**BUSINESS
ASSISTANCE**

142

Riverside

113

San Bernardino

255

Total Businesses

DOLLAR VALUE OF PRIME CONTRACT AWARDS

Svc-Disabled Vet-Owned Small Bus	\$236,200
Women Owned Small Businesses	\$10,164,613
Small Businesses	\$14,209,145
Awarded by State/Local Gov to all Businesses	\$600,136
Awarded by Fed Agencies to all Businesses	\$1,266,584
Awarded by DoD to all categories of Businesses	\$12,342,424



Collaborative Effort with NavalX, UCR, CSUSB, RCCD, & Local/Regional Businesses

- Federal regional innovation/institute designations
- Increased Small Business Innovation Research (SBIR) Awards to Regional Companies
- Innovative technology developed by the military is shared with civilian/private sector for commercialization
- New companies established and thriving!



Regional Highlights

- Last fall during the inaugural cohort, the Cal State SB School of Entrepreneurship graduate technology commercialization class used a NSWC Corona laser sensor patent. The students created four viable business cases around the patent:
 - Hand-held COVID Breathalyzer
 - Hand-held, at-home test for stress hormone level detection
 - Forensic drone for fire insurance investigators
 - Instant gluten detector
- Local Colleges and Universities are in the process of submitting applications for grants and awards to capitalize on the opportunities offered by Tech Bridge that will impact the local economy.
- At the request of RCCD, Congress appropriated \$5 million in FY22 for the Inland Empire Tech Bridge.
- At the request of Riverside County, another \$5 million has been funded for FY23.





INLAND EMPIRE
TECHNICAL TRADE CENTER

Moving Residents from Poverty to Prosperity

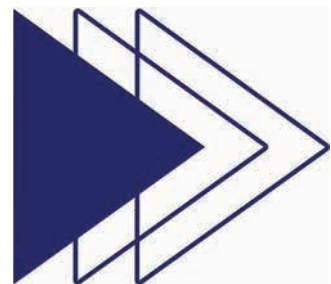


Inland Empire Technical Trade Center (IETTC)



The IETTC is a response to the urgent need for good jobs for the region's residents, diversification of the regional economy, and a locally available educated and skilled workforce for the region's current and future employers.

Percentage of people over the age of 25 with an associate's degree or higher or Career Technical Education (CTE) credential, selected regions.



California Dream Index



Why Focus on the Inland Empire?

Regional interdependence requires regional solutions.



To create equitable access and opportunities for the region's current and future residents, moving many from poverty to prosperity.



To address a persistent and growing need for an educated and skilled local workforce.

Why Focus on the Jurupa Valley?



To provide equitable access to education and training in a traditionally marginalized community.



Pockets of high poverty, low educational attainment within the region require an intensive, localized approach and integration into the larger region.

15



Why Focus on Jurupa Valley?

Economic well-being of the region's residents:

Percentage of RCCD service region living below poverty level:

12.6%

Percentage of Jurupa Valley area living below poverty level:

13.9%

Educational well-being of the region's residents:

Percentage of RCCD service region with a Bachelor's Degree or Higher:

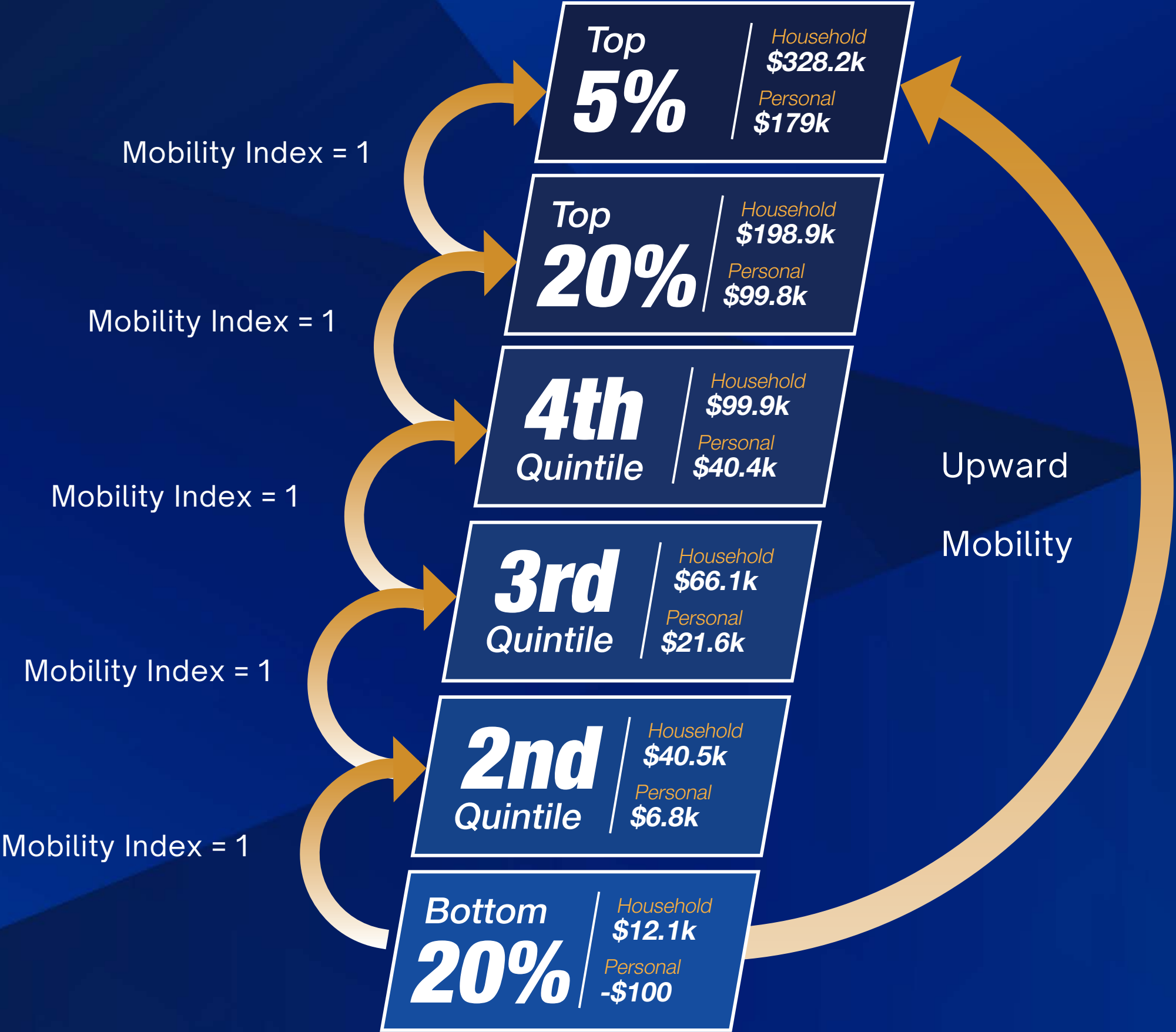
21.4%

Percentage of Jurupa Valley area with a Bachelor's Degree or Higher:

13.2%

Economic Mobility Index

Riverside – San Bernardino Household/Personal Income Interval Means (as of 2021)



Source of Income Data:
2021 ASEC survey by
the U.S. Census Bureau

Anchored in Strong Partnerships

- ✓ The IETTC is a regional asset for the Inland Empire.
- ✓ The IETTC is being created with a broad group of partners, including employers, labor, government, community-based organizations, and other regional educational partners.
- ✓ Partners collectively engage in a regional commitment and shared resolve to tackle persistent poverty in marginalized communities.



Ensuring Equity, Access, and Inclusion

Advisory Councils and Work Teams broadly **represent** the communities served by this Center, ensuring worker, student, and community voice in the development of the Center and its operations.

Partner representation is **inclusive**, inviting the public and private organization **leaders across all sectors** to commit to **working collaboratively** to move residents from poverty to prosperity.



Progress to Date

- Almost \$35 million dollars in funding secured to date - from Assembly Member Cervantes (\$33 million) and Congress Member Takano (\$1.5 million) to plan, purchase, and begin development of the physical site.
- More than \$3 million in additional federal funds secured - just announced.
- Concept has received broad community support
- Connections established with larger regional efforts, including UCR's OASIS project, Inland Economic Growth and Opportunity (IEGO), Riverside County, California Air Resources Board (CARB), and Growing Inland Achievement (GIA)

